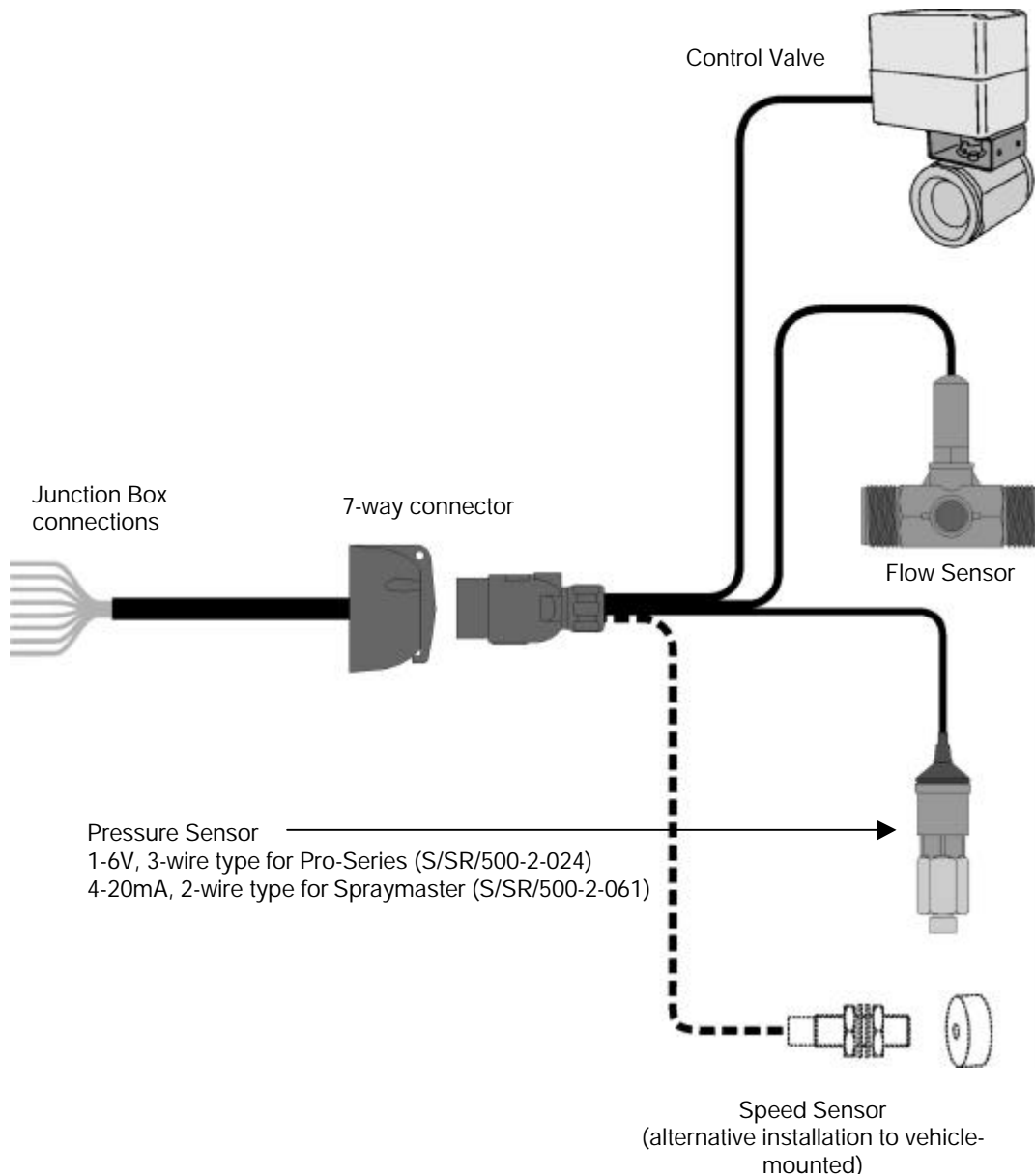




7-WAY CONNECTOR KIT K/7WAY/CONN

Item	Part Number	Description	Qty
1	S/AC/139-97-01	Connector Plug	1
2	S/T608-014	Connector Socket	1
3	S/CBL/TIE/001	Cable Tie	25
4	S//W680-019	5 metres of 8-core Cable	1

This connector kit can be used as an externally mounted connector between the vehicle cab and a demountable implement. The 8-core cable can be cut to suit the installation. It is suggested that you observe the connection scheme as follows (Pro-Series/Spraymaster 200). This will ensure consistency between installations and help with in-field servicing.





Pro-Series J/Box terminal	8-core Cable - Wire colour	Connector Terminal	Function		Sensor Extension Cable wire colour	Sensor Cable wire colour
PL2 6	Brown	1	(L)	Flow Signal	Yellow/Green	Green
PL2 12	Red	2	(54g)	Flow Sensor + V ^[1]	Brown	Brown ^[1]
				2-wire Pressure Sensor + V	Brown	Brown
				3-wire Pressure Sensor + V (marked 'SUPPLY')	Brown	Red
PL2 8	White	3	(31)	Valve +	Brown	Brown
PL2 16	Yellow	4	(R)	Fwd Speed Signal	Brown	Brown
PL2 26	Green	5	(58R)	2-wire Pressure sensor Signal	Blue	Blue
				3-wire Pressure Sensor Signal (marked 'O/P')	Yellow/Green	Brown
PL2 9	Blue	6	(54)	Valve -	Blue	Blue
PL2 3	Black	7	(58L)	Flow Sensor 0V	Blue	White
				Forward Speed Sensor 0V	Blue	Blue
				3-wire Pressure Sensor 0V (marked 'COMMON')	Blue	Black
-	Violet	-	-	Spare		-

[1] The flow sensor can be wired as a 2-wire sensor however, it is recommended you wire it as an active (3-wire) sensor to give a more reliable output at low flow rates.

[2] 1-6V, 3-wire Pressure Sensor (S/SR/500-2-024) fitted to Pro-Series
4-20mA, 2-wire Pressure Sensor (S/SR/500-2-061) fitted to Spraymaster 200